

HDSPARK/HDSTORM ADDENDUM

Thank you for purchasing HDSPARK/HDSTORM.

These products are supplied with utility software to determine the video resolutions and audio channels supported by the connected HDMI monitor. Please note that resolutions NOT shown by this utility CANNOT be displayed by the connected HDMI monitor. All EDIUS-supported frame rates and resolutions can still be edited, but the live output from the HDSPARK/ HDSTORM will not be viewable on the HDMI monitor.

HSX-E1 Monitor is included with **HDSPARK**

HQX-E1 Monitor is included with **HDSTORM**

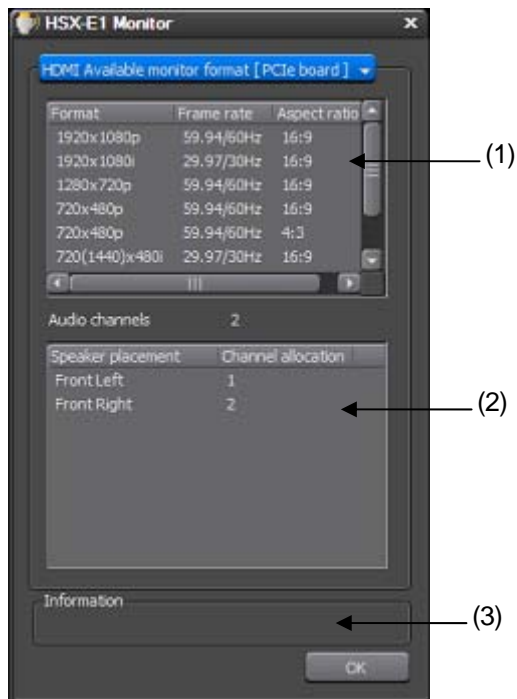
I. How To Start The Utility

1. Connect the HDMI cable from the HDSPARK or HDSTORM to the HDMI monitor.
2. Select [Start]->[All Programs]->[Canopus]->[HSX-E1]->[HSX-E1 Monitor] (HDSPARK)
(HDSTORM: Select [Start]->[All Programs]->[Canopus]->[HQX-E1]->[HQX-E1 Monitor])
3. This icon will appear on Windows task tray - double-click it.



4. HSX-E1 Monitor or HQX-E1 Monitor will start.

II. HDSPARK (HSX-E1) Monitor



- (1) Format
Video formats supported by the HDMI monitor.
- (2) Audio channels
Audio channels supported by the HDMI monitor.
- (3) Information
Current status of the HDSPARK card is shown.

III. HDSTORM (HQX-E1) Monitor



(1) Current Port

Select the HDMI port (Input or Output through the HDSTORM card or the HDSTORM Bay) to show the supported video resolutions and audio channels/speaker placement.

(2) Information Area

Supported video and audio formats are shown.

(3) Current monitor

Connected HDMI monitor is shown (if an HDSTORM Bay is installed, two monitors can be connected – one to the card and one to the bay).

(4) Information Area (Video)

Video formats supported by the HDMI monitor are displayed.

(5) Information Area (Audio)

Audio formats supported by the HDMI monitor are displayed.

(6) HDMI through setting

HDMI pass-through can be selected, for when HDSTORM is not being used with EDIUS.

(7) Information

Current status of the HDSTORM card is shown.